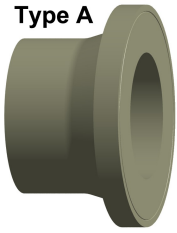
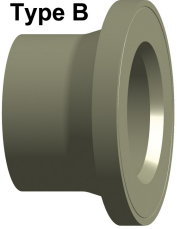


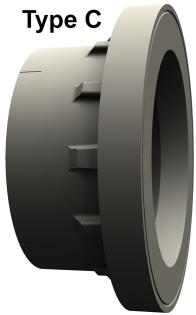
Type A



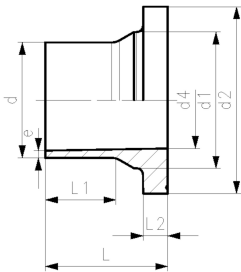
Type B



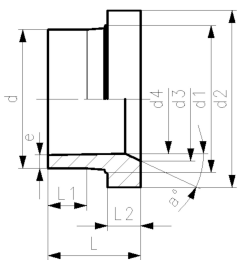
Type C



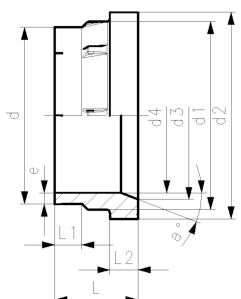
Type A



Type B



Type C



PROGEF Standard flange adaptor S5/SDR11 (PN10)
Combined jointing face: flat and serrated

Model:

- Material: PP-H
- Conventional butt-welding according to DVS 2207
- IR- Infrared welding compatible
- Suitable for flange connections to metric (from d110 also to ANSI/ASME B16.5)
- Up to d315, suitable for butterfly valve type 567/578 and 038/039. Above use PROGEF Standard adaptor for butterfly valves SDR11 (d355-d500)
- Gasket: profile flange gasket EPDM No. 48 44 07, FKM No. 49 44 07
- * Material: PP-R, not suitable for butterfly valves

d (mm)	DN (mm)	FM	Code	SP	Weight (kg)
20	15	IR	727 798 706	10	0.015
25	20	IR	727 798 707	10	0.029
32	25	IR	727 798 708	10	0.042
40	32	IR	727 798 709	10	0.061
50	40	IR	727 798 710	20	0.091
63	50	IR	727 798 711	10	0.144
75	65	IR	727 798 712	1	0.243
90	80	IR	727 798 713	12	0.324
110	100	IR	727 798 714	1	0.441
125	100	IR	727 798 715	8	0.520
140	125	IR	727 798 716	10	0.800
160	150	IR	727 798 317	4	0.927
180	150	IR	727 798 318	3	1.026
200	200	IR	727 798 319	2	1.652
225	200	IR	727 798 320	2	1.665
250	250	IR	727 798 321	1	2.630
280	250	IR	727 798 322	1	2.521
315	300	IR	727 798 323	1	3.247
*	355	350	727 798 324	1	6.600
*	400	400	727 798 325	1	9.100
*	450	500	727 798 326	1	17.300
*	500	500	727 798 327	1	18.400

d (mm)	L (mm)	L1 (mm)	L2 (mm)	d1 (mm)	d2 (mm)	d3 (mm)	d4 (mm)	e (mm)	Type	a°
20	50	29	7	26	45		16	1.9	A	
25	52	27	9	32	58		20	2.3	A	
32	54	28	10	40	68		26	2.9	A	
40	56	25	11	49	78		32	3.7	A	
50	62	32	12	60	88		40	4.6	A	
63	68	38	14	75	102		51	5.8	A	
75	80	43	16	89	122	66	61	6.9	B	30
90	80	41	17	105	138	78	73	8.2	B	30
110	80	40	18	125	158	100	90	10.0	B	30
125	82	35	25	132	158	114	102	11.4	B	25
140	89	39	25	155	188	127	114	12.8	B	27
160	92	40	25	175	212	151	127	14.6	C	30
180	92	40	30	180	212	154	148	17.4	B	30
200	100	35	32	232	268	203	174	19.3	C	30
225	100	35	32	235	268	210	196	21.7	C	30
250	120	45	36	285	320	252	203	24.0	C	25
280	120	45	37	291	320	265	228	26.8	C	30
315	150	50	52	338	370	300	256	30.2	C	22
*	355	162	70	40	373	430	284	33.9	C	45
*	400	172	70	46	427	482	387	38.2	C	45
*	450	225	105	60	514	585	400	43.0	C	15
*	500	231	105	60	530	585	442	47.8	C	15

Data sheet

valid from: 4/29/20



The technical data are not binding. They neither constitute expressly warranted characteristics nor guaranteed properties nor a guaranteed durability. They are subject to modification. Our General Terms of Sale apply.

Georg Fischer Piping Systems Ltd, Postfach, CH-8201 Schaffhausen/Switzerland

Phone +41 -(0)52-631 1111

e-mail: info.ps@georgfischer.com

Internet: <http://www.gfps.com>