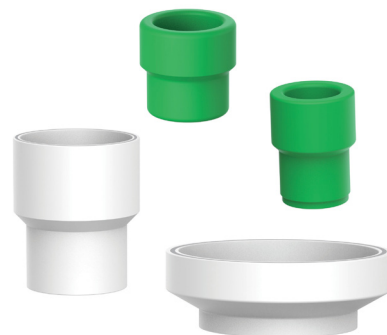




### Riduzioni a saldare Reducers to weld



#### Descrizione Description

A completamento dei sistemi di tubazioni fusio-technik, aquatechnik offre una vasta ed esauriente serie di raccordi realizzata in PP-R 80 Super, PP-RCT e a settori con tubazioni faser fiber-LIGHT. La gamma comprende raccordi di transizione, parti terminali realizzate con inserto in metallo filettato maschio e femmina, giunti flangiati, valvole, oltre che raccordi d'integrazione che consentono di congiungere e creare collegamenti con tutti i sistemi di tubazioni e raccordi proposti dall'azienda.

La giunzione tra le parti avviene tramite polifusione (saldatura a bicchiere fino al Ø 125 mm, testa a testa per i diametri con dimensioni superiori), processo che garantisce la massima sicurezza di tenuta anche nelle condizioni di impiego più estreme.

La costante attenzione alle richieste e alle esigenze di mercato ha inoltre portato aquatechnik alla creazione di un apposito reparto produttivo capace di realizzare collettori e pezzi speciali su specifiche richieste di progetto.

Tale reparto è supportato da uno studio tecnico composto da personale qualificato che, oltre a gestire la parte progettuale necessaria alla realizzazione dei particolari creati su misura del cliente, e in grado di guidare lo stesso nella scelta della più appropriata tipologia di prodotto, in funzione delle condizioni d'impiego.

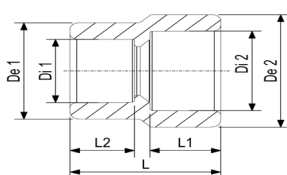
As a completion of the fusio-technik piping systems, Aquatechnik offers a wide and exhaustive range of fittings made in PP-R 80 Super, PP-RCT and in sectors with faser fiber-LIGHT pipes. The range includes transition fittings, terminal parts realized with threaded male and female insert in metal, flange joints, valves, as well as integration fittings that allow to join and create connections with every system of pipes and fittings proposed by the company.

The junction among the parts is made by polyfusion (coupling welding until Ø 125 mm, butt-welding for diameters with higher dimensions), process that guarantees the highest tightness safety even in the most extreme utilization conditions.

The constant attention to the demands and requirements of the market has led Aquatechnik to the creation of special production department able to realize manifolds and special parts on specific project demands.

This department is supported by a technical study composed of qualified staff that, not only takes care of the projects necessary to realize special parts upon customers' order, but is also able to suggest the customer the best choice of the most appropriate typology of product, according to the utilization conditions.

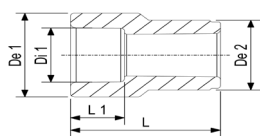
#### Specifiche prodotto Product specifications



#### MANICOTTO RIDOTTO, a saldare in PP-R REDUCER PIPE COUPLING, to weld in PP-R

Articolo Code	SDR	DN	De1	Di1	De2	Di2	L	L1	L2	Sp	Peso Wt.	Conf. Pack.	Scatola Box
			mm	mm	mm	mm	mm	mm	mm	mm	gr	pz	pz
62312	5	F25-F20	29,5	20,0	34,5	25,0	34,0	16,0	14,5	4,75	13,0	10	400
62316	5	F32-F25	34,5	25,0	43,5	32,0	39,0	18,0	16,0	4,75	21,0	10	300

#### Specifiche prodotto Product specifications

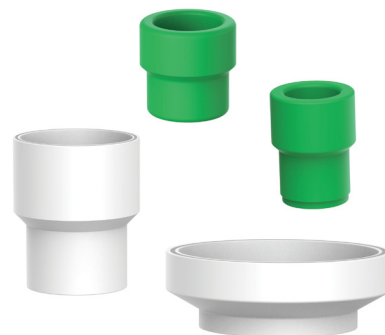


#### RIDUZIONE (saldatura a bicchiere), a saldare in PP-R REDUCER (coupling welding), to weld in PP-R

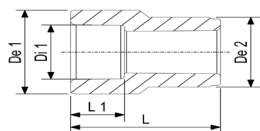
Articolo Code	SDR	DN	De1	De2	Di1	L	L1	Sp	Peso Wt.	Conf. Pack.	Scatola Box
			mm	mm	mm	mm	mm	mm	gr	pz	pz
62112	5	M25-F20	29,5	25,0	20,0	40,3	14,5	4,75	13,5	10	400
62114	5	M32-F20	29,5	32,0	20,0	39,5	14,5	4,75	18,5	10	300
62116	5	M32-F25	34,5	32,0	25,0	39,5	16,0	4,75	19,5	10	300
62118	5	M40-F20	29,5	40,0	20,0	42,0	14,5	4,75	38,0	5	500
62120	5	M40-F25	34,5	40,0	25,0	42,0	16,0	4,75	45,0	5	400



## Riduzioni a saldare Reducers to weld



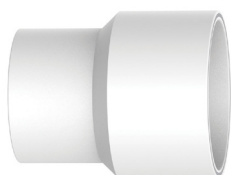
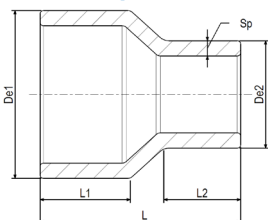
### Specifiche prodotto Product specifications



**RIDUZIONE** (saldatura a bicchiere), a saldare in PP-R  
**REDUCER** (coupling welding), to weld in PP-R

Articolo Code	SDR	DN	De1	De2	Di1	L	L1	Sp	Peso Wt.	Conf. Pack.	Scatola Box
			mm	mm	mm	mm	mm	mm	gr	pz	pz
62122	5	M40-F32	43,5	40,0	32,0	42,0	18,0	5,75	53,0	5	300
62124	5	M50-F20	29,5	50,0	20,0	45,0	14,5	4,75	50,0	5	300
62126	5	M50-F25	34,5	50,0	25,0	45,0	16,0	4,75	60,0	5	300
62128	5	M50-F32	43,5	50,0	32,0	45,0	18,0	5,75	65,0	5	300
62130	5	M50-F40	53,5	50,0	40,0	45,0	20,5	6,75	70,0	5	200
62132	5	M63-F25	34,5	63,0	25,0	57,0	16,0	4,75	80,0	1	150
62134	5	M63-F32	43,5	63,0	32,0	57,0	18,0	5,75	85,0	1	100
62136	5	M63-F40	53,5	63,0	40,0	57,0	20,5	6,75	90,0	1	100
62138	5	M63-F50	68,0	63,0	50,0	57,0	23,5	9,00	115,0	1	100
62139	5	M75-F40	53,5	75,0	40,0	65,5	20,5	6,75	135,0	1	100
62140	5	M75-F50	68,0	75,0	50,0	65,5	23,5	9,00	140,0	1	80
62142	5	M75-F63	85,0	75,0	63,0	65,5	27,0	11,00	200,0	1	80
62144	5	M90-F50	68,0	90,0	50,0	76,0	23,5	9,00	280,0	1	50
62152	5	M90-F63	85,0	90,0	63,0	76,0	27,5	11,00	290,0	1	50
62153	5	M90-F75	101,0	90,0	75,0	76,0	30,0	13,00	320,0	1	50
62155	5	M110-F63	85,0	110,0	63,0	90,0	27,5	11,00	350,0	1	30
62157	5	M110-F75	101,0	110,0	75,0	90,0	30,0	13,00	450,0	1	30
62159	5	M110-F90	120,0	110,0	90,0	90,0	33,0	15,00	450,0	1	30
62168	5	M125-F75	101,0	125,0	75,0	110,0	30,0	13,00	506,0	1	30
62170	5	M125-F90	120,0	125,0	90,0	110,0	33,0	15,00	550,0	1	30
62172	5	M125-F110	147,0	125,0	110,0	110,0	37,0	18,50	600,0	1	24

### Specifiche prodotto Product specifications

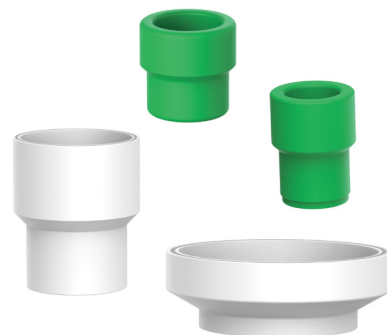


**RIDUZIONE** (saldatura testa a testa), a saldare in PP-RCT  
**REDUCER** (butt-welding), to weld in PP-RCT

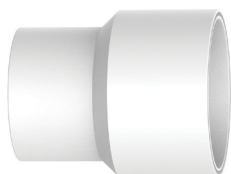
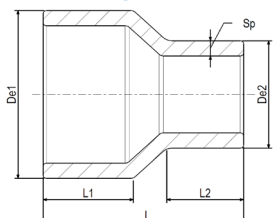
Articolo Code	SDR	DN	De1	De2	L	L1	L2	Sp	Peso Wt.	Conf. Pack.	Scatola Box
			mm	mm	mm	mm	mm	mm	gr	pz	pz
62173U	11	160-90	160,0	90,0	233,0	110,0	88,0	8,20	1400	1	8
62174U	11	160-110	160,0	110,0	233,0	106,0	91,0	10,00	1400	1	8
62176U	11	160-125	160,0	125,0	214,0	102,0	94,5	11,40	1235	1	4
62180U	11	200-125	200,0	125,0	320,0	125,0	115,0	11,40	2430	1	
62182U	11	200-160	200,0	160,0	240,0	118,0	101,0	14,60	2010	1	
62184U	11	250-160	250,0	160,0	300,0	135,0	115,0	14,60	3860	1	
62186U	11	250-200	250,0	200,0	300,0	140,0	130,0	18,20	3805	1	
62200U	11	315-250	315,0	250,0	381,0	173,0	150,0	22,70	7600	1	



### Riduzioni a saldare Reducers to weld



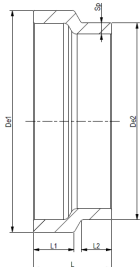
#### Specifiche prodotto Product specifications



**RIDUZIONE** (saldatura testa a testa), a codolo lungo, a saldare in PP-RCT  
**REDUCER** (butt-welding), with long tang, to weld in PP-RCT

Articolo Code	SDR	DN	De1	De2	L	L1	L2	Sp	Peso Wt.	Conf. Pack.	Scatola Box
			mm	mm	mm	mm	mm	mm	gr	pz	pz
62182UZ	17,6	200-160	200,0	160,0	240,0	118,0	101,0	9,10	1320	1	
62184UZ	17,6	250-160	250,0	160,0	300,0	135,0	115,0	9,10	2270	1	
62186UZ	17,6	250-200	250,0	200,0	300,0	140,0	130,0	11,40	2500	1	
62200UZ	17,6	315-250	315,0	250,0	380,0	170,0	150,0	14,20	5085	1	

#### Specifiche prodotto Product specifications



**RIDUZIONE** (saldatura testa a testa), a codolo corto, a saldare in PP-RCT  
**REDUCER** (butt-welding), with short tang, to weld in PP-RCT

Articolo Code	SDR	DN	De1	De2	L	L1	L2	Sp	Peso Wt.	Conf. Pack.	Scatola Box
			mm	mm	mm	mm	mm	mm	gr	pz	pz
62214UZ	17,6	355-250	355,0	250,0	125,0	65,0	30,0	14,20	2490	1	
62216UZ	17,6	355-315	355,0	315,0	125,0	65,0	50,0	17,90	2420	1	
62244UZ	17,6	400-355	400,0	355,0	125,0	45,0	65,0	20,20	3020	1	

#### Caratteristiche tecniche Technical specifications

**Materia prima:**

- gamma SDR 5: PP-R Super 80 (polipropilene copolimero random)
- gamma SDR 11 e SDR 17,6: PP-RCT (polipropilene copolimero random a cristallinità modificata)

**Colore:**

- gamma SDR 5: verde
- gamma SDR 11: bianco
- gamma SDR 17,6: bianco

**Misure:** da Ø 20 a Ø 400 mm

**Raw material:**

- range SDR 5: PP-R Super 80 (polypropylene random copolymer)
- range SDR 11 and SDR 17,6: PP-RCT (polypropylene random copolymer with modified crystallinity)

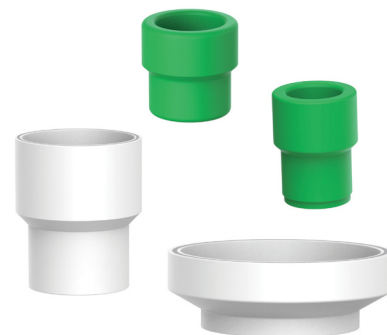
**Colour:**

- range SDR 5: green
- range SDR 11: white
- range SDR 17,6: white

**Sizes:** from Ø 20 to Ø 400 mm



### Riduzioni a saldare Reducers to weld



#### Caratteristiche tecniche Technical specifications

- Spessore:**
- da Ø 20 a Ø 125 mm: SDR 5
  - da Ø 160 a Ø 315 mm: SDR 11 e SDR 17,6
  - da Ø 355 a Ø 400 mm: SDR 17,6

**Marcatura:** tutti i raccordi della gamma fusio-technik (salvo quando le ridotte dimensioni dei pezzi non lo consentono) riportano i riferimenti aziendali, il periodo di fabbricazione, le misure del pezzo.

- Thickness:**
- from Ø 20 to Ø 125 mm: SDR 5
  - from Ø 160 to Ø 315 mm: SDR 11 and SDR 17,6
  - from Ø 355 to Ø 400 mm: SDR 17,6

**Marking:** all the fittings of the fusio-technik range (except when the small part dimensions do not allow so) carry the company details, the production period, the part dimensions.

#### Norme di riferimento Reference standards

Prodotto in conformità ai requisiti richiesti dalla normativa Europea EN ISO 15874, DIN 8077 e 8078, al DM 174, e ASTM F2389.

Produced in accordance with the requirement of the European standard EN ISO 15874, DIN 8077 and DIN 8078, DM 174 and ASTM F2389.

#### Campi di impiego Fields of application



Consigliato per vantaggi tecnici  
Recommended for technical advantages



Possibile impiego  
Possible use

Utilizzabili con tutte le gamme di tubazioni fusio-technik nei relativi ambiti di impiego.

Raccorderia idonea al trasporto di acqua potabile calda e fredda.

Per la correlazione tra pressione e temperatura d'esercizio, fare sempre riferimento alle condizioni d'esercizio definite per le tubazioni, riportate nella relativa documentazione tecnica.

Per la realizzazione di impianti veicolanti liquidi e/o sostanze diverse, consultare preventivamente i nostri uffici tecnici (tel. +39 (0)331 307015, fax +39 (0)331 306923, e-mail: ufficio.tecnico@aquatechnik.it).

They can be used with every fusio-technik pipe ranges in their related application fields.

Fittings suitable for the transport of hot and cold drinking water.

For the correlation between pressure and operating temperature, always refer to the operating conditions defined for the pipes, shown in the relative technical documentation.

To set up for the conveyance of liquids and/or different substances, contact our technical department (tel. +39 0331 307015, fax +39 0331 306923, e-mail: ufficio.tecnico@aquatechnik.it).

#### Voce di capitolato Specification item

##### Serie SDR 5

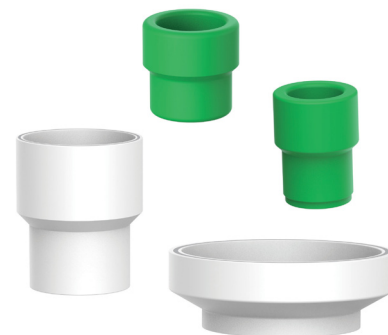
Serie di raccordi dritti ridotti SDR 5 dal Ø 20 fino al Ø 125, per riduzione dei diametri di lavoro. Realizzata completamente in PP-R Super 80 (polipropilene copolimero random) prodotto mediante stampaggio. Giunzione con tubazioni mediante saldatura a tasca. Prodotto in conformità ai requisiti richiesti dalla normativa Europea UNI EN ISO 15874-3, DIN 8077 e 8078, al DM 174 e ASTM F2389 per il trasporto di acqua calda e fredda destinata al consumo umano, per riscaldamento, condizionamento, aria compressa ed impianti meccanici in genere. Adatto alla veicolazione di fluidi ad una temperatura massima in esercizio in continuo di 80°C per 10 anni ad una pressione massima di 10,0 bar (con SF=1,5). Adatto al contatto con acqua potabile. Colore: verde. Marca: aquatechnik.

##### Range SDR 5

Range of reduced straight fittings SDR 5 from Ø 20 to Ø 125 for the reduction of the work diameters. Completely made in PP-R Super 80 (polypropylene random copolymer) by injection moulding. Junction with pipings through coupling welding (polyfusion). Produced in accordance with the requirements of the European Standard UNI EN ISO 15874-3, DIN 8077/8078, DM 174 and ASTM F2389, for the transport of potable hot and cold water intended for human consumption, for warming, conditioning, compressed air and mechanical systems in general. Suitable for the conveyance of fluids at a maximum continuous working temperature of 80°C for 10 years at a maximum pressure of 10,0 bar (with SF=1,5). It is suitable for the contact with potable water. Colour: green. Brand: Aquatechnik.



## Riduzioni a saldare Reducers to weld



### Serie SDR 11

Serie di raccordi dritti ridotti SDR 11 dal Ø 160 fino al Ø 315, per riduzione dei diametri di lavoro. Realizzata completamente in PP-RCT (polipropilene copolimero random a cristallinità modificata) prodotto mediante stampaggio. Giunzione con tubazioni mediante saldatura testa a testa. Prodotto in conformità ai requisiti richiesti dalla normativa Europea UNI EN ISO 15874-3, DIN 8077 e 8078, al DM 174 e alla ASTM F2389, per il trasporto di acqua calda e fredda destinata al consumo umano, per riscaldamento, condizionamento, aria compressa ed impianti meccanici in genere. Sistema adatto alla veicolazione di fluidi ad una temperatura massima in esercizio in continuo di 40°C per 100 anni ad una pressione massima di 12,8 bar (con SF=1,5) ed una temperatura massima limite di 70°C a 7,9 bar per 50 anni (con SF=1,5). Adatto al contatto con acqua potabile. Colore: bianco. Marca: aquatechnik.

### Serie SDR 17,6

Serie di raccordi dritti ridotti SDR 17,6 disponibili con codolo lungo (dal Ø 200 fino al Ø 315) e a codolo corto (dal Ø 355 fino al Ø 400), per riduzione dei diametri di lavoro. Realizzata completamente in PP-RCT (polipropilene copolimero random a cristallinità modificata) prodotto mediante stampaggio. Giunzione con tubazioni mediante saldatura testa a testa. Prodotto in conformità ai requisiti richiesti dalla normativa Europea UNI EN ISO 15874-3, DIN 8077 e 8078, al DM 174 e alla ASTM F2389, per il trasporto di acqua calda e fredda destinata al consumo umano, per riscaldamento, condizionamento, aria compressa ed impianti meccanici in genere. Sistema adatto alla veicolazione di fluidi ad una temperatura massima in esercizio in continuo di 80°C per 25 anni ad una pressione massima di 4,8 bar (con SF=1,25) ed una temperatura massima limite di 95°C a 3,6 bar per 10 anni (con SF=1,25). Adatto al contatto con acqua potabile. Colore: bianco. Marca: aquatechnik.

### Range SDR 11

Range of reduced straight fittings SDR 11 from Ø 160 to Ø 315 for the reduction of the work diameters. Completely made in PP-RCT (polypropylene random copolymer with modified crystallinity) by injection moulding. Junction with pipings through coupling butt-welding. Produced in accordance with the requirements of the European Standard UNI EN ISO 15874-3, DIN 8077/8078, DM 174 and ASTM F2389, for the transport of potable hot and cold water intended for human consumption, for warming, conditioning, compressed air and mechanical systems in general. Suitable for the conveyance of fluids at a maximum continuous working temperature of 40°C for 100 years at a maximum pressure of 12,8 bar (with SF=1,5) and a maximum limit temperature of 70°C at 7,9 bar for 50 years (with SF=1,5). It is suitable for the contact with potable water. Colour: white. Brand: Aquatechnik.

### Range SDR 17,6

Range of reduced straight fittings SDR 17,6 available with long shank (from Ø 200 up to Ø 315) and with short shank (from Ø 355 up to Ø 400) for the reduction of the work diameters. Completely made in PP-RCT (polypropylene random copolymer with modified crystallinity) by injection moulding. Junction with pipings through coupling butt-welding. Produced in accordance with the requirements of the European Standard UNI EN ISO 15874-3, DIN 8077/8078, DM 174 and ASTM F2389, for the transport of potable hot and cold water intended for human consumption, for warming, conditioning, compressed air and mechanical systems in general. Suitable for the conveyance of fluids at a maximum continuous working temperature of 80°C for 25 years at a maximum pressure of 4,8 bar (with SF=1,25) and a maximum limit temperature of 95°C at 3,6 bar for 10 years (with SF=1,25). It is suitable for the contact with potable water. Colour: white. Brand: Aquatechnik.