

INSULATION RANGE
FOR DOMESTIC HEATING & PLUMBING

Tubolit

2019 UK Catalogue

www.armacell.co.uk



 **armacell**[®]
Tubolit[®]

FOR DOMESTIC HEATING & PLUMBING PIPEWORK

Tubolit DG

The economic insulation for effective energy saving

- // Flexible PE insulation material to save energy and improve acoustic comfort for domestic heating and plumbing applications
- // Meets Domestic Building Services Compliance Guide (DBSCG) Part L recommendations
- // FM and UL approved
- // Matching range for plastic pipe sizes

www.armacell.co.uk



 **armacell**[®]
Tubolit[®]

TECHNICAL DATA - TUBOLIT DG

| | |
|------------------------------|--|
| Brief description | Extruded flexible closed-cell insulation material to reduce heat loss and noise on domestic heating and plumbing installations. |
| Material type | Foam material based on polyethylene. Factory made polyethylene foam (PEF) according to EN 14313 |
| Colour | Grey |
| Material Special information | Self-adhesive coating on tapes and tubes: Pressure-sensitive adhesive coating on modified acrylate basis with mesh structure covered with polyethylene foil. |
| Product range | 1 and 2m length tubes. |
| Application | Insulation / protection of pipes (heating system pipes, domestic hot and cold water pipes) and other parts of heating and plumbing installations (incl. elbows, fittings, flanges etc) |
| Assembly | After installation linear shrinkage of approx 2% or more may occur during the initial and even later phase of system operation. Under certain conditions (e.g high humidity, main distribution pipes, pipes with constant flow) cold water pipelines must be insulated with Armaflex, as with chilled water pipes in air-conditioning systems. |
| Approval compliance | Declaration of Performance is available in accordance with Article 7 (3) of Regulation (EU) No 305/2011 at www.armacell.com/DoP . |

| Property | Value/Assessment | Standard/Test method |
|---|--|---|
| Temperature range *1 | | |
| | Max. service temperature | +100°C +85°C for tape |
| | Min. service temperature | |
| Thermal conductivity | | |
| | Tubes 9mm - 30mm | $\lambda_{40^\circ\text{C}} \leq 0.040 \text{ W/(m}\cdot\text{K)}$ $[40+0.1 \cdot \vartheta_m + 0.0008 \cdot \vartheta_m^2]/1000$ |
| | Tape | $\lambda_{45^\circ\text{C}} \leq 0.045 \text{ W/(m}\cdot\text{K)}$ $[45+0.1 \cdot \vartheta_m + 0.0008 \cdot \vartheta_m^2]/1000$ |
| Fire performance | | |
| Reaction to fire | Tubes | E |
| | Tape | E |
| Acoustic performance | | |
| Reduction of structure-borne sound transmission | Insulation effect | $\leq 30 \text{ dB(A)}$ |
| | | Test D 2762 Tested acc. to DIN ISO 11925-2 |
| Other technical features | | |
| Dimension and tolerances | In accordance with EN 14304, table 1 and 2 | Test EU 5709 Tested acc. to EN 822, EN 823 & EN 13467 |
| Storage & shelf life*2 | Tape | 1 year |

1. For temperatures below or above those published please contact Technical Services to request the corresponding information.

2. Stored in dry, clean conditions at normal relative humidity (50% to 70%) and ambient temperature (0°C - 35°C)

Tubes - 2m

Colour - Grey
Material - Polyethylene

| | Pipe max outside Ø (mm) | Length (m) | Code | m/carton |
|---------------------------|-------------------------|--------------|----------------|----------|
| 9mm insulation thickness | 10 | 2 | TL-10/9-DGU | 520 |
| | 15 | 2 | TL-15/9-DGU | 380 |
| | 22 | 2 | TL-22/9-DGU | 250 |
| | 28 | 2 | TL-28/9-DGU | 190 |
| | 35 | 2 | TL-35/9-DGU | 150 |
| | 42 | 2 | TL-42/9-DGU | 110 |
| | 48 | 2 | TL-48/9-DGU | 90 |
| 13mm insulation thickness | 10 | 2 | TL-10/13-DGU | 330 |
| | 15 | 2 | TL-15/13-DGU | 256 |
| | 22 | 2 | TL-22/13-DGU | 180 |
| | 28 | 2 | TL-28/13-DGU | 140 |
| | 35 | 2 | TL-35/13-DGU | 120 |
| | 42 | 2 | TL-42/13-DGU | 90 |
| | 48 | 2 | TL-48/13-DGU | 70 |
| | 54 | 2 | TL-54/13-DGU | 66 |
| | 60 | 2 | TL-60/13-DGU | 56 |
| 76 | 2 | TL-76/13-DGU | 42 | |
| 19mm insulation thickness | 15 | 2 | TL-15/19-DGU | 134 |
| | 22 | 2 | TL-22/19-DGU | 108 |
| | 28 | 2 | TL-28/19-DGU | 96 |
| | 35 | 2 | TL-35/19-DGU | 70 |
| | 42 | 2 | TL-42/19-DGU | 60 |
| 25mm insulation thickness | 15 | 2 | TL-15/25-DGU | 100 |
| | 22 | 2 | TL-22/25-DGU | 80 |
| | 28 | 2 | TL-28/25-DGU | 66 |
| | 35 | 2 | TL-35/25-DGU | 56 |
| | 42 | 2 | TL-42/25-DGU | 28 |
| 30mm insulation thickness | 35 | 2 | TL-35/30-DGU • | 28 |
| | 42 | 2 | TL-42/30-DGU • | 24 |
| | 54 | 2 | TL-54/30-DGU • | 22 |

Other information

- Not a stock item

Tubes - 1m

Colour - Grey
Material - Polyethylene

| | Pipe max outside Ø (mm) | Length (m) | Code | m/carton |
|---------------------------|-------------------------|------------|-----------------|----------|
| 9mm insulation thickness | 15 | 1 | TL-15/9-DGU-1M | 190 |
| | 22 | 1 | TL-22/9-DGU-1M | 125 |
| | 28 | 1 | TL-28/9-DGU-1M | 95 |
| | 35 | 1 | TL-35/9-DGU-1M | 75 |
| 13mm insulation thickness | 15 | 1 | TL-15/13-DGU-1M | 128 |
| | 22 | 1 | TL-22/13-DGU-1M | 90 |
| | 28 | 1 | TL-28/13-DGU-1M | 70 |
| | 35 | 1 | TL-35/13-DGU-1M | 60 |
| 19mm insulation thickness | 15 | 1 | TL-15/19-DGU-1M | 67 |
| | 22 | 1 | TL-22/19-DGU-1M | 54 |
| | 28 | 1 | TL-28/19-DGU-1M | 48 |
| | 35 | 1 | TL-35/19-DGU-1M | 35 |
| 25mm insulation thickness | 15 | 1 | TL-15/25-DGU-1M | 50 |
| | 22 | 1 | TL-22/25-DGU-1M | 40 |
| | 28 | 1 | TL-28/25-DGU-1M | 33 |
| | 35 | 1 | TL-35/25-DGU-1M | 28 |

Tubes - Domestic Building Services Compliance guide (DBSCG)

Thickness required to meet Part L DBSCG. Maximum permissible heat losses from central heating pipework.

Colour - Grey
Material - Polyethylene

| Pipe max outside Ø (mm) | Max permissible heat loss (W/m) | Insulation thickness (mm) | Length (m) | Code | m/ Carton |
|-------------------------|---------------------------------|---------------------------|------------|----------------|-----------|
| 10 | 7.23 | 13 | 2 | TL-10/13-DGU | 330 |
| 15 | 7.89 | 19 | 2 | TL-15/19-DGU | 134 |
| 22 | 9.12 | 25 | 2 | TL-22/25-DGU | 80 |
| 28 | 10.07 | 25 | 2 | TL-28/25-DGU | 66 |
| 35 | 11.08 | 30 | 2 | TL-35/30-DGU • | 28 |
| 42 | 12.19 | 30 | 2 | TL-42/30-DGU • | 24 |
| 54 | 14.12 | 30 | 2 | TL-54/30-DGU • | 22 |

Pre-fabricated elbows (Tubolit Quick)

Colour - Grey

Material - Polyethylene. Pre-cut 90° elbows

| | Pipe max outside Ø (mm) | Code | Pieces/Bag | Bags/Carton |
|---------------------------|-------------------------|----------------|------------|-------------|
| 9mm insulation thickness | 15 | TL-15/9-Q90-2 | 2 | 30 |
| | 22 | TL-22/9-Q90-2 | 2 | 30 |
| 13mm insulation thickness | 15 | TL-15/13-Q90-2 | 2 | 30 |
| | 22 | TL-22/13-Q90-2 | 2 | 30 |
| | 42 | TL-42/13-Q90-2 | 2 | 30 |
| 19mm insulation thickness | 28 | TL-28/19-Q90-2 | 2 | 30 |

Pre-fabricated t-pieces (Tubolit Quick)

Colour - Grey

Material - Polyethylene. Pre-cut equal t-pieces

| | Pipe max outside Ø (mm) | Code | Pieces/Bag | Bags/Carton |
|---------------------------|-------------------------|----------------|------------|-------------|
| 9mm insulation thickness | 15 | TL-15/9-QET-2 | 2 | 30 |
| | 22 | TL-22/9-QET-2 | 2 | 30 |
| 13mm insulation thickness | 15 | TL-15/13-QET-2 | 2 | 30 |
| | 22 | TL-22/13-QET-2 | 2 | 30 |
| | 42 | TL-42/13-QET-2 | 2 | 30 |
| 19mm insulation thickness | 28 | TL-28/19-QET-2 | 2 | 30 |

Tape - Self-adhesive

Colour - Grey

| Code | Width (mm) | Length (m) | Thickness (mm) | Rolls/Carton |
|------------------|------------|------------|----------------|--------------|
| TLT-TAPE/50-DG • | 50 | 10 | 3 | 12 |

Clips

Colour - Grey

| Code | Pieces/Bag | Pieces/Carton |
|------------|------------|---------------|
| TL-CLIPS • | 100 | 25 |

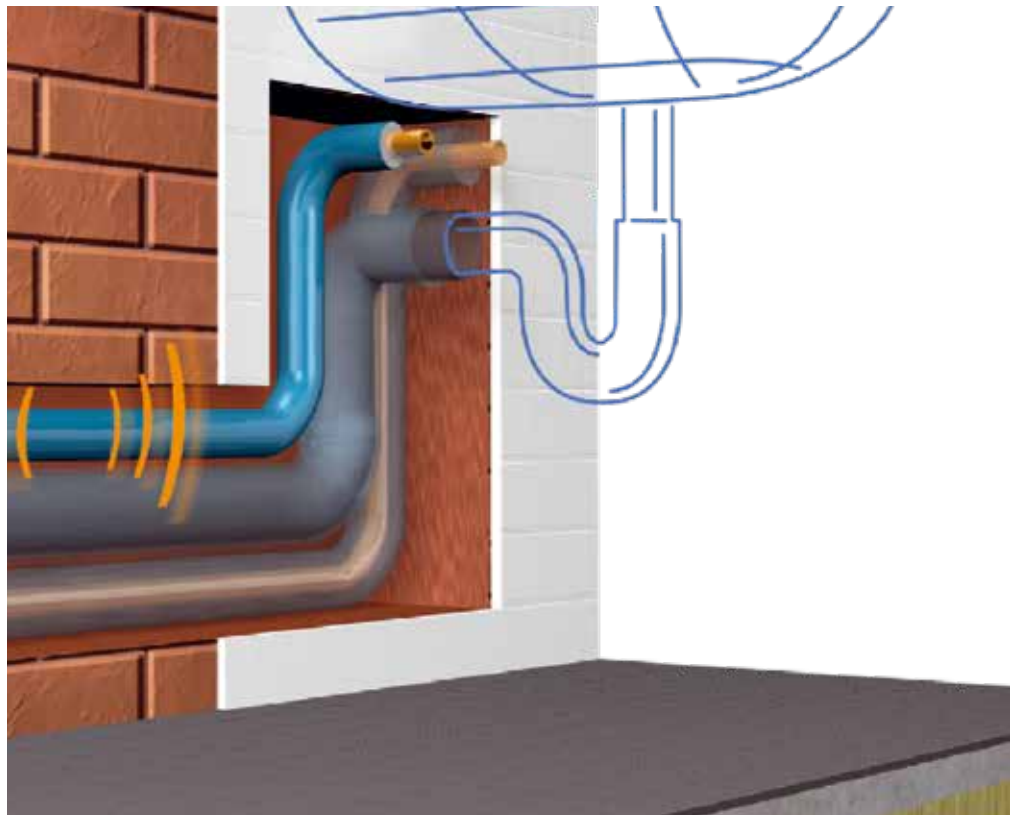
FOR DOMESTIC HEATING & PLUMBING PIPEWORK

Tubolit S Plus

The protective tube for in-wall insulations with limited space

- // Flexible, closed-cell extruded coil insulation material suitable for in wall pipes with limited space
- // Flexible and easy to sleeve with additional inner foil lining
- // Durable outer PE-film for additional protection.

www.armacell.co.uk



 **armacell**[®]
Tubolit[®]

TECHNICAL DATA -TUBOLIT S PLUS

| | |
|------------------------------|--|
| Brief description | Flexible, closed-cell extruded insulation material to reduce heat loss and noise on in wall heating and plumbing pipes with limited space. Durable PE-film outer covering provides additional protection and inner foil helps sleeve over in-situ pipework. |
| Material type | Foam material based on polyethylene. Factory made polyethylene foam (PEF) according to EN 14313 |
| Colour | Foam - Grey Outer foil - Blue |
| Material Special information | Foil coating on outer surface for additional protection of insulation. Foil coating on inner surface for better sleeve-on installation. |
| Product range | Tubes endless. |
| Application | Insulation / protection of pipes (heating system pipes, domestic hot and cold water pipes) and other parts of heating and plumbing installations (incl. elbows, fittings, flanges etc) |
| Assembly | After installation linear shrinkage of approx 2% or more may occur during the initial and even later phase of system operation. Under certain conditions (e.g high humidity, main distribution pipes, pipes with constant flow) cold water pipelines must be insulated with Armaflex, as with chilled water pipes in air-conditioning systems. |
| Approval compliance | Declaration of Performance is available in accordance with Article 7 (3) of Regulation (EU) No 305/2011 at www.armacell.com/DoP . |

| Property | Value/Assessment | Standard/Test method |
|---------------------------------|--|--|
| Temperature range *1 | | |
| | Max. service temperature +100°C +85°C for tape | Test EU 5676 Tested acc. to EN 14707, EN 14313 |
| | Min. service temperature | |
| Thermal conductivity | | |
| | Tubes λ 40°C \leq 0.045 W/(m·K) $[41+0.1 \cdot \varrho_m + 0.0008 \cdot \varrho_m^2]/1000$ | Test EU 5676 Declared acc. to EN ISO 13787 Tested acc. EN ISO 8497 |
| Fire performance | | |
| Reaction to fire*2 | Tubes E | Test EU 5676 Classified acc. to EN 13501-1 Tested acc. to EN ISO 11925-2 |
| Other technical features | | |
| Dimension and tolerances | In accordance with EN 14304, table 1 and 2 | Test EU 5709 Tested acc. to EN 822, EN 823 & EN 13467 |

1. For temperatures below or above those published please contact Technical Services to request the corresponding information.

2. The building materials classification is valid on metal or solid, mineral surfaces.

Tubes (endless)

Colour - Grey, Covering colour - Blue with robust protective film on outside plus transparent inner film for fast and easy application

Material - Polyethylene

| | Pipe max outside Ø (mm) | Length (m) | Code | m/Carton |
|--------------------------|----------------------------|------------|-----------------|----------|
| 4mm insulation thickness | 15 | 20 | TL-12-15/4-S+ • | 520 |
| | 18 | 20 | TL-18/4-S+ • | 440 |
| | 22 | 20 | TL-22/4-S+ • | 400 |
| | 28 | 20 | TL-28/4-S+ • | 320 |
| | 30 | 20 | TL-30/4-S+ • | 320 |
| | 35 | 20 | TL-35/4-S+ • | 280 |
| | 42 | 20 | TL-42/4-S+ • | 240 |

Other information

- Not a stock item

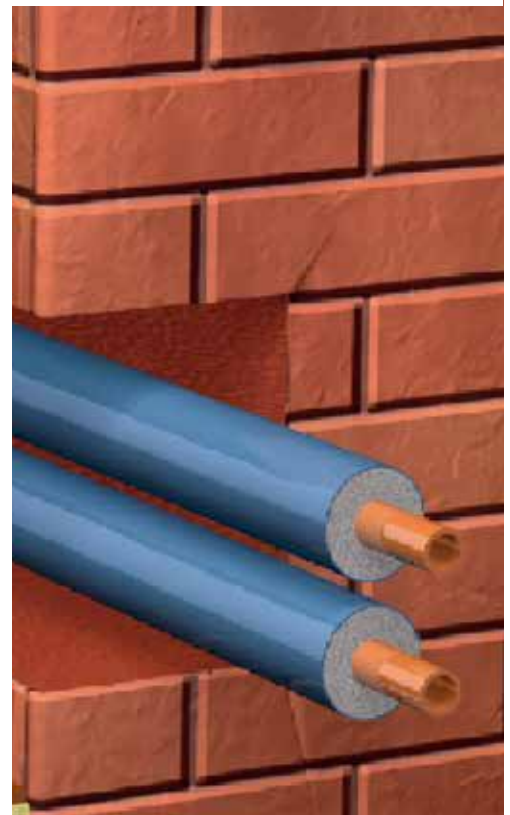
FOR DOMESTIC HEATING & PLUMBING PIPEWORK

Tubolit S

Insulation to prevent transmission of structure-borne noise

- // Flexible, closed-cell extruded 2m tube insulation material with durable PE-film outer covering to protect in wall pipes
- // Provides protection against aggressive building materials for in wall cavity pipes
- // Improved acoustic de-coupling of the pipe from the building structure.

www.armacell.co.uk



 **armacell**[®]
Tubolit[®]

TECHNICAL DATA -TUBOLIT S

| | |
|------------------------------|--|
| Brief description | Flexible, closed-cell extruded insulation material with durable PE-film outer covering to reduce heat loss and noise on heating and plumbing installations. |
| Material type | Foam material based on polyethylene. Factory made polyethylene foam (PEF) according to EN 14313 |
| Colour | Foam - Grey Outer foil - Blue |
| Material Special information | Foil coating on outer surface for additional protection of in wall cavity pipes. |
| Product range | Tubes. |
| Application | Insulation / protection of pipes (heating system pipes, domestic hot and cold water pipes) and other parts of heating and plumbing installations (incl. elbows, fittings, flanges etc) |
| Assembly | After installation linear shrinkage of approx 2% or more may occur during the initial and even later phase of system operation. Under certain conditions (e.g high humidity, main distribution pipes, pipes with constant flow) cold water pipelines must be insulated with Armaflex, as with chilled water pipes in air-conditioning systems. |

| Property | Value/Assessment | Standard/Test method |
|---------------------------------|---|--|
| Temperature range *1 | | |
| | Max. service temperature +100°C +85°C for tape | Test EU 5675 Tested acc. to EN 14707, EN 14313 |
| | Min. service temperature | |
| Thermal conductivity | | |
| | Tubes $\lambda_{40^\circ\text{C}} \leq 0.040 \text{ W/(m}\cdot\text{K)}$ $[36+0.1 \cdot \vartheta_m + 0.0008 \cdot \vartheta_m^2]/1000$ | Test EU 5675 Declared acc. to EN ISO 13787 Tested acc. EN ISO 8497 |
| Fire performance | | |
| Reaction to fire*2 | Tubes E | Test EU 5675 Classified acc. to EN 13501-1 Tested acc. to EN ISO 11925-2 |
| Other technical features | | |
| Dimension and tolerances | In accordance with EN 14304, table 1 and 2 | Test EU 5675 Tested acc. to EN 822, EN 823 & EN 13467 |

1. For temperatures below or above those published please contact Technical Services to request the corresponding information.

2. The building materials classification is valid on metal or solid, mineral surfaces.

Tubes (endless)

Colour - Blue with hard-wearing PE film

| | Pipe max outside Ø (mm) | Length (m) | Code | m/Carton |
|---------------------------|----------------------------|------------|--------------|----------|
| 9mm insulation thickness | 15 | 2 | TL-15/9-S • | 234 |
| | 22 | 2 | TL-22/9-S • | 178 |
| | 28 | 2 | TL-28/9-S • | 130 |
| | 35 | 2 | TL-35/9-S • | 96 |
| | 42 | 2 | TL-42/9-S • | 72 |
| | 48 | 2 | TL-48/9-S • | 70 |
| 13mm insulation thickness | 15 | 2 | TL-15-13-S • | 172 |
| | 22 | 2 | TL-22-13-S • | 128 |
| | 28 | 2 | TL-28-13-S • | 98 |
| | 35 | 2 | TL-35-13-S • | 72 |
| | 42 | 2 | TL-42-13-S • | 56 |

Other information

- Not a stock item

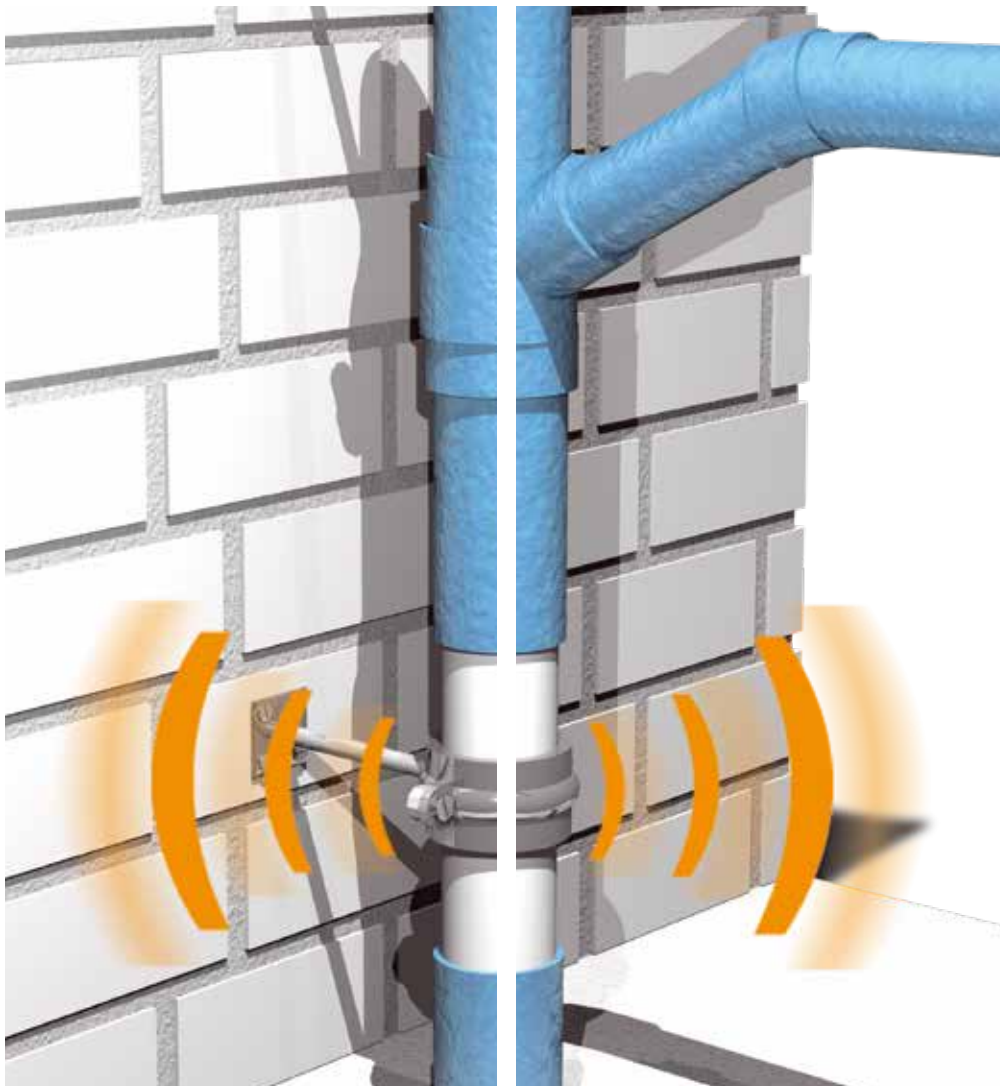
FOR DOMESTIC DRAINAGE PIPEWORK

Tubolit AR Fonoblok

The noise reducing insulation for cast iron waste water pipes

- // Improved acoustic comfort
- // Easy application over flanges and elbows
- // <15 db(A) on cast iron pipes
- // Durable outside coating

www.armacell.co.uk



 **armacell**[®]
Tubolit[®]

TECHNICAL DATA -TUBOLIT AR FONOBLOK

| | |
|------------------------------|---|
| Brief description | Extruded flexible closed-cell insulation material that reduces noise and prevents condensation on cast iron drainage pipes. |
| Material type | Foam material based on polyethylene. Factory made polyethylene (PEF) according to EN 14313 |
| Colour | Blue |
| Material Special information | Self-adhesive coating on tapes: Pressure-sensitive adhesive coating on modified acrylate basis with mesh structure, covered with polyethylene foil. |
| Product range | Tubes - Coils (Endless) and tape |
| Application | Acoustic and thermal insulation of internal waste water and rain water pipes in residential and non-residential buildings. |
| Approval compliance | Declaration of Performance is available in accordance with Article 7 (3) of Regulation [EU] No 305/2011 at www.armacell.com/DoP . |

| Property | Value/Assessment | Standard/Test method |
|---|---|---|
| Temperature range *1 | | |
| | Max. service temperature | Test EU 5677 & EU5682 |
| | +100 °C | Tested acc. to EN 14707, EN 14313 |
| | +85 °C for tape | |
| | Min. service temperature | |
| Thermal conductivity | | |
| | Tubes | Test EU 5677 & EU5682 |
| | λ 40 °C \leq 0.045 W/(m·K) $[41+0.1 \cdot \vartheta_m + 0.0008 \cdot \vartheta_m^2]/1000$ | Declared acc. to EN ISO 13787 Tested acc. EN ISO 8497 |
| | Tape | |
| | λ 40 °C \leq 0.045 W/(m·K) $[41+0.1 \cdot \vartheta_m + 0.0008 \cdot \vartheta_m^2]/1000$ | |
| Fire performance | | |
| Reaction to fire*2 | Tubes | Test EU 5677 & EU5682 |
| | Tape | Classified acc. to EN 13501-1 Tested acc. to EN ISO 11925-2 |
| Acoustic performance | | |
| Reduction of structure-borne sound transmission | On cast iron waste water pipes \leq 15 db(A) | Test D 2144 Tested acc. to EN ISO 14366 |
| Other technical features | | |
| Dimension and tolerances*3 | In accordance with EN 14304, table 1 and 2 | Test EU 5677 & EU5682 Tested acc. to EN 822, EN 823 & EN 13467 |

1. For temperatures below or above those published please contact Technical Services to request the corresponding information.

2. The building materials classification is valid on metal or solid, mineral surfaces.

3. Stored in dry clean rooms at normal relative humidity (50% to 70%) and ambient temperature (0 °C - 35 °C)

Tubes - Coils (Endless)

Colour - Blue with hard-wearing PE film

| | Length (m) | Pipe max outside Ø (mm) | Nominal dia. DN | Code | m/carton | Rolls/carton |
|--------------------------|------------|-------------------------|-----------------|---------------|----------|--------------|
| 5mm insulation thickness | 15 | 57 | 50 | TL-50/5-AR • | 135 | 9 |
| | 15 | 76 | 70 | TL-70/5-AR • | 105 | 7 |
| | 15 | 89 | 90 | TL-90/5-AR • | 75 | 5 |
| | 15 | 108 | 100 | TL-100/5-AR • | 75 | 5 |
| | 15 | 133 | 125 | TL-125/5-AR • | 60 | 4 |
| | 15 | 160 | 150 | TL-150/5-AR • | 45 | 3 |

Tape - Self-adhesive

Colour - Blue

| Code | Width (mm) | Length (m) | Thickness (mm) | Rolls/Carton |
|------------------|------------|------------|----------------|--------------|
| TL-TAPE/50-AR • | 50 | 15 | 3 | 12 |
| TL-TAPE/100-AR • | 100 | 15 | 3 | 6 |

Other information

- Not a stock item

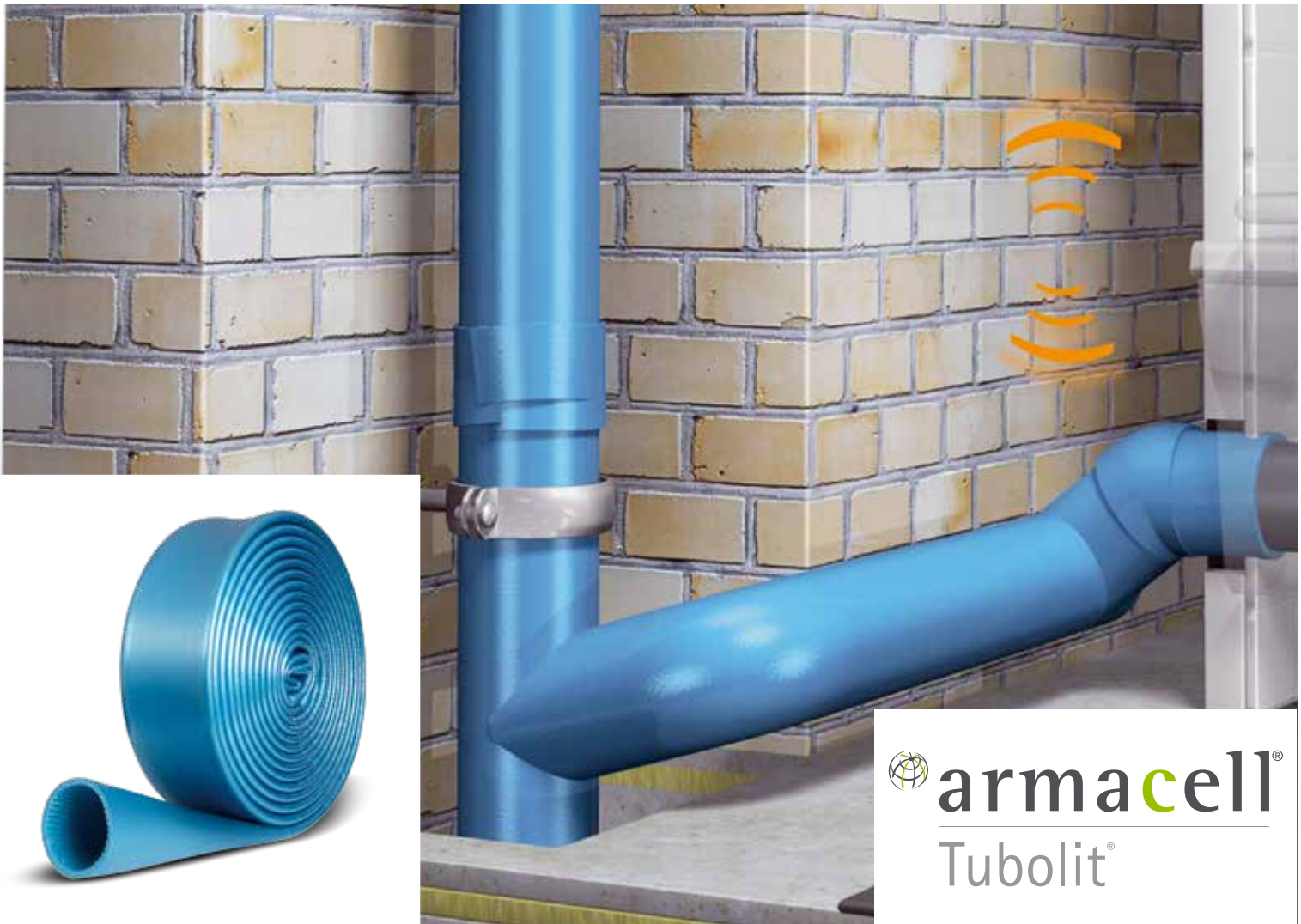
FOR DOMESTIC DRAINAGE PIPEWORK

Tubolit AR Fonowave

The noise reducing insulation for plastic waste water pipes

- // Improved acoustic comfort
- // Easy application over flanges and elbows
- // <11 db(A) on plastic pipes
- // Durable outside coating

www.armacell.co.uk



 **armacell**[®]
Tubolit[®]

TECHNICAL DATA - TUBOLIT AR FONOWAVE

| | |
|------------------------------|---|
| Brief description | Extruded flexible closed-cell insulation material that reduces noise and prevents condensation, especially on plastic waste water and rain water pipes. |
| Material type | Foam material based on polyethylene. Factory made polyethylene (PEF) according to EN 14313 |
| Colour | Blue |
| Material Special information | Self-adhesive coating on tapes: Pressure -sensitive adhesive coating on modified acrylate basis with mesh structure, covered with polyethylene foil. |
| Product range | Tubes - Coils (Endless) and tape |
| Application | Acoustic and thermal insulation of internal waste water and rain water pipes in residential and non-residential buildings. |
| Approval compliance | Declaration of Performance is available in accordance with Article 7 (3) of Regulation (EU) No 305/2011 at www.armacell.com/DoP . |

| Property | Value/Assessment | Standard/Test method |
|---|--|---|
| Temperature range *1 | | |
| | Max. service temperature +100°C +85°C for tape | Test EU 5679 Tested acc. to EN 14707, EN 14313 |
| | Min. service temperature | |
| Thermal conductivity | | |
| | Tubes λ 40°C \leq 0.045 W/(m·K) $[45+0.1 \cdot \vartheta_m + 0.0008 \cdot \vartheta_m^2]/1000$ | Test EU 5679 & EU5682 Declared acc. to EN ISO 13787 |
| | Tape λ 40°C \leq 0.045 W/(m·K) $[45+0.1 \cdot \vartheta_m + 0.0008 \cdot \vartheta_m^2]/1000$ | Tested acc. EN ISO 8497 |
| Fire performance | | |
| Reaction to fire*2 | Tubes E | Test EU 5679 & EU5682 Classified acc. to EN 13501-1 |
| | Tape E | Tested acc. to EN ISO 11925-2 |
| Acoustic performance | | |
| Reduction of structure-borne sound transmission | On plastic waste water pipes \leq 11 db(A) | Test D 4478 Tested acc. to EN ISO 14366 |
| Other technical features | | |
| Dimension and tolerances*3 | In accordance with EN 14304, table 1 and 2 | Test EU 5679 & EU5682 Tested acc. to EN 822, EN 823 & EN 13467 |

1. For temperatures below or above those published, please contact Technical Services to request the corresponding information.

2. The building materials classification is valid on metal or solid, mineral surfaces.

3. Stored in dry clean rooms at normal relative humidity (50% to 70%) and ambient temperature (0°C - 35°C)

Tubes - Coils (Endless)

Colour - Blue with hard-wearing PE film

| | Length (m) | Pipe max outside Ø (mm) | Nominal dia. DN | Code | m/carton | Rolls/carton |
|--------------------------|------------|-------------------------|-----------------|----------------|----------|--------------|
| 9mm insulation thickness | 10 | 50/56 | 50/56 | TL-50/9-ARW • | 80 | 8 |
| | 10 | 75 | 70 | TL-70/9-ARW • | 60 | 6 |
| | 10 | 110 | 100 | TL-100/9-ARW • | 50 | 5 |
| | 10 | 125/135 | 125 | TL-125/9-ARW • | 40 | 4 |

Tape - Self-adhesive

Colour - Blue

| Code | Width (mm) | Length (m) | Thickness (mm) | Rolls/Carton |
|------------------|------------|------------|----------------|--------------|
| TL-TAPE/50-ARW • | 50 | 15 | 3 | 12 |

Other information

- Not a stock item

Armacell UK
Mars Street
Oldham
Greater Manchester
OL9 6LY

0161 287 7100
info.uk@armacell.com

All data and technical information are based on results achieved under typical application conditions. It is the customer's responsibility to verify if the product is suitable for the intended application. The responsibility for professional and correct installation and compliance with relevant building regulations lies with the customer. By ordering/receiving product you accept the Armacell General Terms and Conditions of Sale applicable in the region. Please request a copy if you have not received these.

© Armacell, 2019. Tubolit is a trademark of the Armacell Group.
00154 | Armacell | Tubolit | Product Catalogue | 032019 | UK | EN

ABOUT ARMACELL

As the inventors of flexible foam for equipment insulation and a leading provider of engineered foams, Armacell develops innovative and safe thermal, acoustic and mechanical solutions that create sustainable value for its customers. Armacell's products significantly contribute to global energy efficiency making a difference around the world every day.

With 3,000 employees and 25 production plants in 17 countries, the company operates two main businesses, Advanced Insulation and Engineered Foams.

Armacell focuses on insulation materials for technical equipment, high-performance foams for high-tech and lightweight applications and next generation aerogel blanket technology.

For more information, please visit:
www.armacell.co.uk



Tubolit[®]